

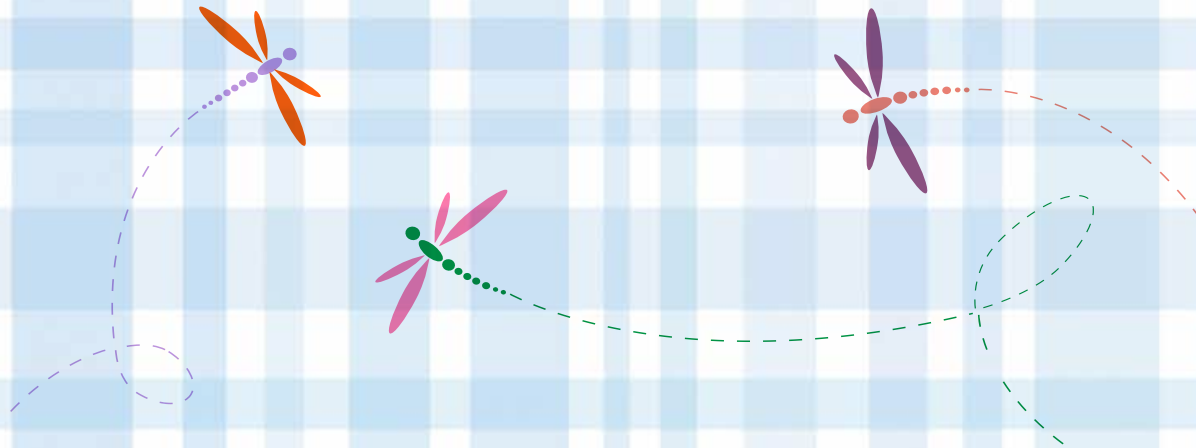
**JCC  
EARLY  
CHILDHOOD  
EDUCATION  
CENTERS**

Jewish Community Center  
of Greater Baltimore  
[jcc.org](http://jcc.org)



**nurturing • educational preparedness • confidence building**





## The Journey Begins

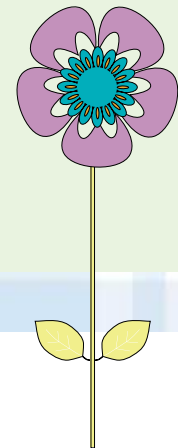
When you register your child for our Early Childhood Education Programs, your family becomes our family, you'll be a part of the entire community and the J.

## Our Facilities

Your child's journey begins in one of our warm and inviting classrooms. Along with our expert teaching staff, your child will have access to all that the J has to offer including a full-sized gymnasium, teaching kitchen, outdoor play areas, and indoor pools, where each child (ages 3+) receives American Red Cross Certified instructional swim lessons.

## Our Week

Your child will be exposed to group activities and one-on-one interactions while also having multiple opportunities for exploratory, child-directed play. Each week, we will celebrate Shabbat and learn about Jewish culture and values. We will also introduce your child to science, math, and literature in our classrooms and libraries. Each child learns through play, participating in music, art, nature, cooking, and dance.



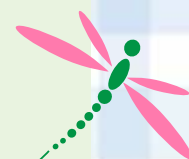
*"The Meyerhoff ECE has become an extendedwww community for us. We have made many new friends, including the teachers. We love how every teacher knows every student in the school. They are always encouraging the children to learn by playing and exploring. If children makes a mess in the process that's OK, they learn to be responsible for their actions by cleaning up."*

*Erica Bloom – JCC ECE Parent*

## **Our Teachers**

At the core of our program are excellent teachers who understand that the early years of life are the most critical in forming a child's opinion of himself or herself. Our staff's goal is to create an enriched environment full of excitement and encouragement. As a result every child develops a love of learning and a feeling of self-worth as an individual and as a member of a group. The teachers put theory into practice recognizing that each child enters the classroom with a unique set of skills, strengths, and needs. That's why we individualize our teaching styles to meet the needs of each and every child.

We consider ourselves to be partners with our parents. Enhancing your child's confidence and curiosity through creative engagement is what we do – everyday!







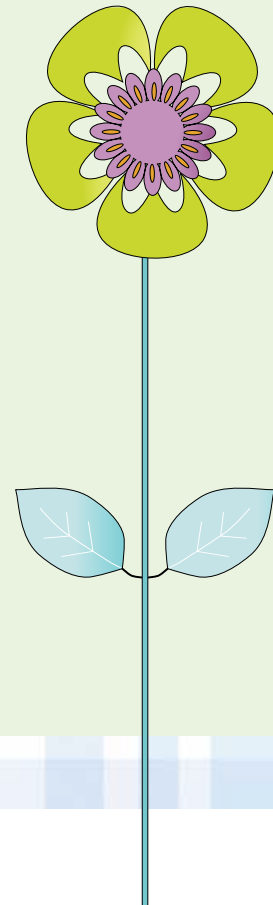


***“The wonderful staff at the JCC ECE has enriched my daughter’s passion for learning and has provided her the foundation she needs in her early years of development. My daughter looks forward to going to school everyday to see the teachers and friends who have shaped her educational journey.”***

***–Sonel Friedman, JCC ECE Parent***

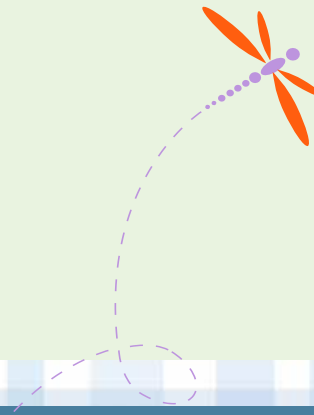
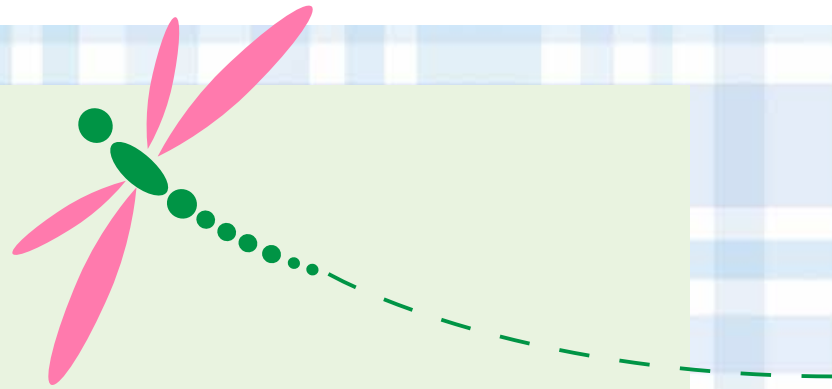
## **Healthy Choices**

Our *Healthy Choices* curriculum has been recognized by Michelle Obama’s *Let’s Move!* Child Care Initiative for Exceptional Work in the Prevention of Childhood Obesity. This program teaches children ages 2 to 5 about the importance of eating fruits and vegetables, whole grains and healthy proteins. Every week our students have the opportunity to taste new foods like kale, quinoa, and kiwi. Daily physical activity also serves as a critical component of this program.



## Exceptional Program Advantages

- Red Cross Instructional Swim
- Nutrition
- Physical Education
- Fitness
- Indoor and Outdoor Play
- Reading and Math Readiness
- Language Development and Early Literacy
- Science and Nature
- Gardening
- Jewish Programming
- Hebrew Language
- Cooking
- Art and Music
- Field Trips
- Nursing Services (Owings Mills)
- Afternoon Enrichment Class



***“The play-based exploratory and integrated curriculum at the J is terrific! You’ve got three outdoor playgrounds, gym twice a week, instructional swimming, music, Hebrew, and cooking . The teachers are all professional and nurturing, and on top of that you have Healthy Choices and the age-appropriate focus on building healthy habits through nutrition and exercise. We love it!”***

***–Ashley Royle, JCC ECE Parent***







## Our Programs

### Infant/Toddler

**Meyerhoff ECE | Weinberg Park Heights J**

**Ages 3-24 months**

Monday-Friday | 7:00am-6:00pm

(Friday closings hours vary by Shabbat times)

### Preschool

Early Drop Off and Late Stay available at both locations.

**Meyerhoff ECE | Weinberg Park Heights J**

**Age 2** (includes January 2's option)

2, 3, or 5 day options: 9:00am-3:30pm

**Age 3**

3, 4, or 5 day options: 9:00am-3:30pm

**Age 4**

4 or 5 day options: 9:00am-3:30pm

**Stoler ECE | Rosenbloom Owings Mills J**

**Age 2** (includes January 2's option)

2, 3, or 5 day options: 9:00am-12:00pm,  
9:00am-1:00pm

**Age 3 and 4**

3 or 5 day options: 9:00am-12:00pm,  
9:00am-2:00pm 9:00am-3:30pm

### Preschool Plus

Available during summer months as well!

**Meyerhoff ECE | Weinberg Park Heights J**

**Stoler ECE | Rosenbloom Owings Mills J**

**Ages 2-5**

Monday-Friday, 7:00am-6:00pm

(Friday closings hours vary by Shabbat times)

### Kindergarten

Early Drop Off & Late Stay available

**Stoler ECE | Rosenbloom Owings Mills J**

**Age 5**

Monday-Friday, 9:00am-3:30pm

### Noah's Ark Summer Camp

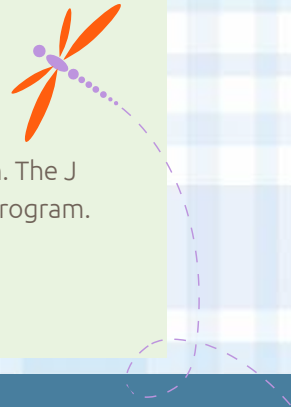
**Meyerhoff ECE | Weinberg Park Heights J**

**Stoler ECE | Rosenbloom Owings Mills J**

**Ages 2-5**

### Accreditation

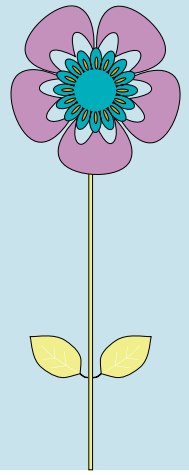
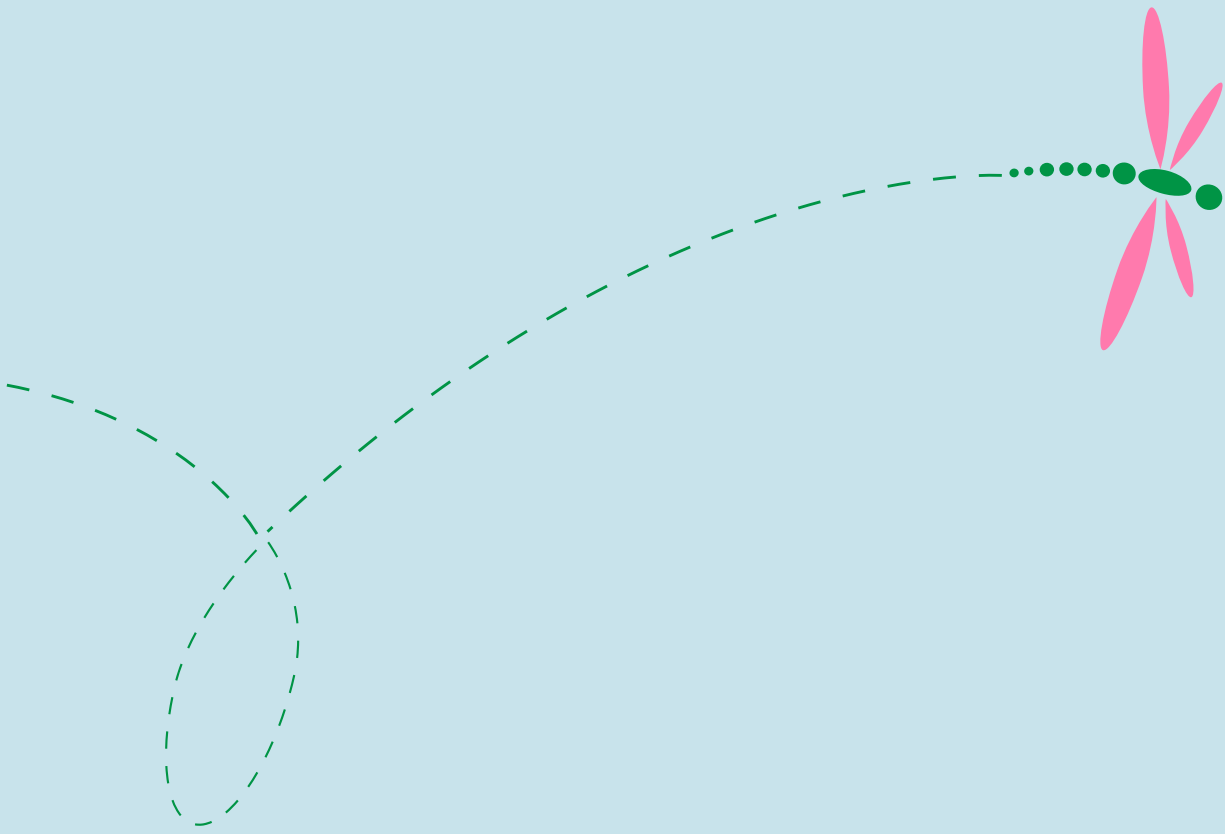
All school programs are licensed by the Maryland State Department of Education. The J also participates in the Maryland Excels program.



*For more information or to set up a tour:*

**Stoler ECE at the Rosenbloom Owings Mills J**  
**Ilene Meister | 410.559.3554 | imeister@jcc.org**

**Meyerhoff ECE at the Weinberg Park Heights J**  
**Ahuva Radzyner | 410.500.5936 | phece@jcc.org**



**Jewish Community Center  
of Greater Baltimore**

3506 Gwynnbrook Avenue | Owings Mills, MD 21117  
5700 Park Heights Avenue | Baltimore, MD 21215

AN AGENCY OF  
**The Associated**  
*Inspiring Jewish Community*

